

nara roesler



fábio miguez
alvenarias

nara roesler são paulo

opening saturday, may 28

exhibition may 28 – jul 23, 2022

cover

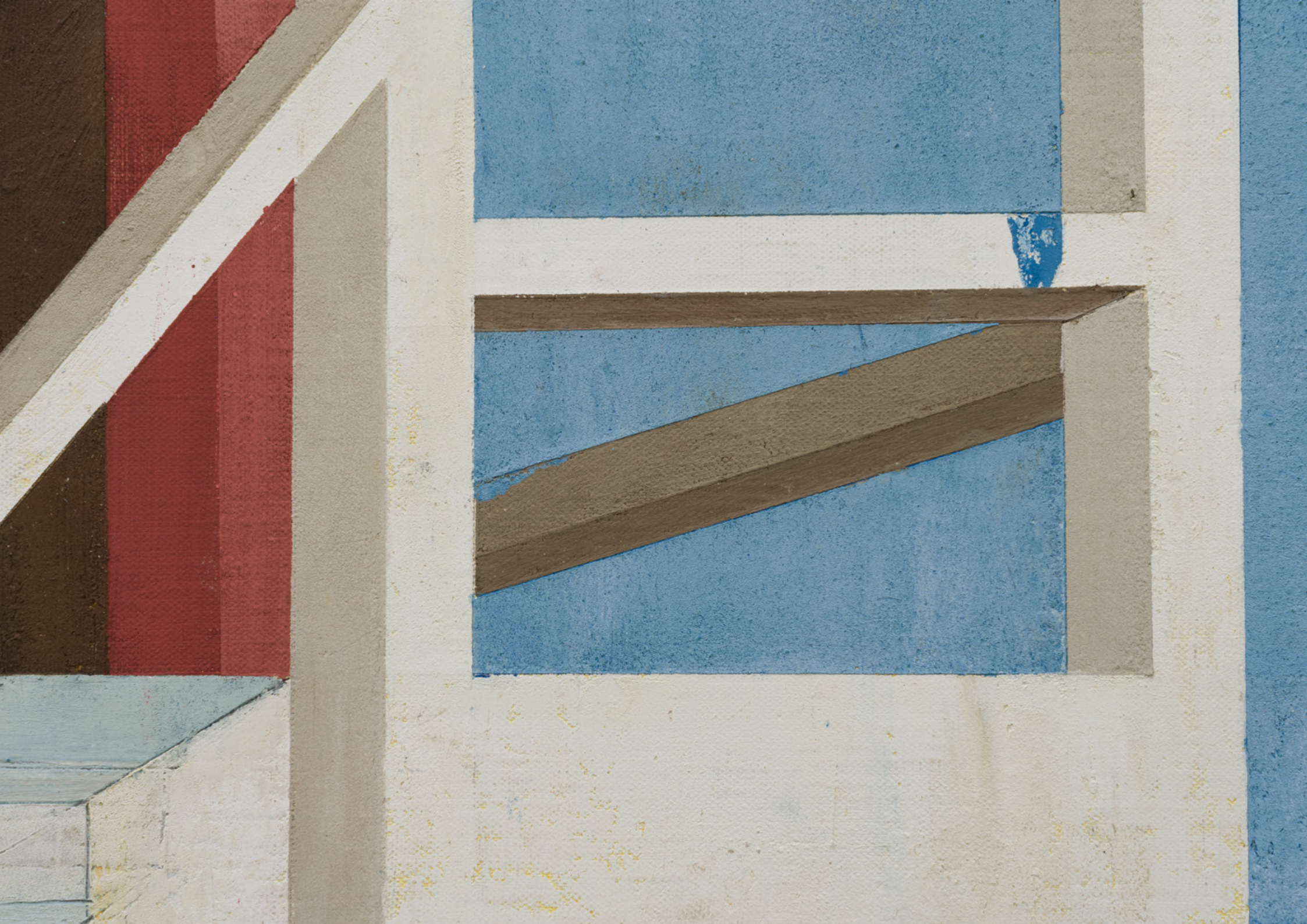
Untitled (Piero), 2019

Untitled (Sassetta), 2020

Untitled (Fra), 2020

Untitled (Uccello), 2021

Nara Roesler São Paulo is pleased to present *Alvenarias*, a solo exhibition by Fábio Miguez. The show brings together over forty paintings, organized in two series: *Atalhos* and *Volpi*. Produced over the last two years, these works represent the most recent developments in the pictorial research conducted by Miguez over the last decade.



*The poet is a man, too
A builder who builds his wall:
A door and window manufacturer*

excerpt from Manifesto, Nicanor Parra



artist's studio
São Paulo, 2022





Untitled (Giotto), 2021
oil paint and wax on linen
30,3 x 24,4 x 2,4 cm
11.9 x 9.6 x 0.9 in

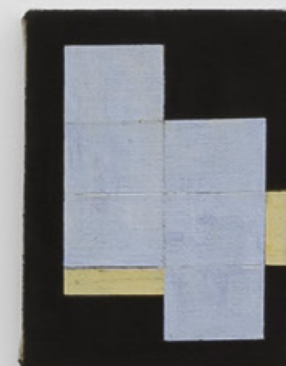




Untitled (Giotto), 2021
oil paint and wax on linen
30,2 x 24,5 x 2,5 cm
11.9 x 9.6 x 1 in



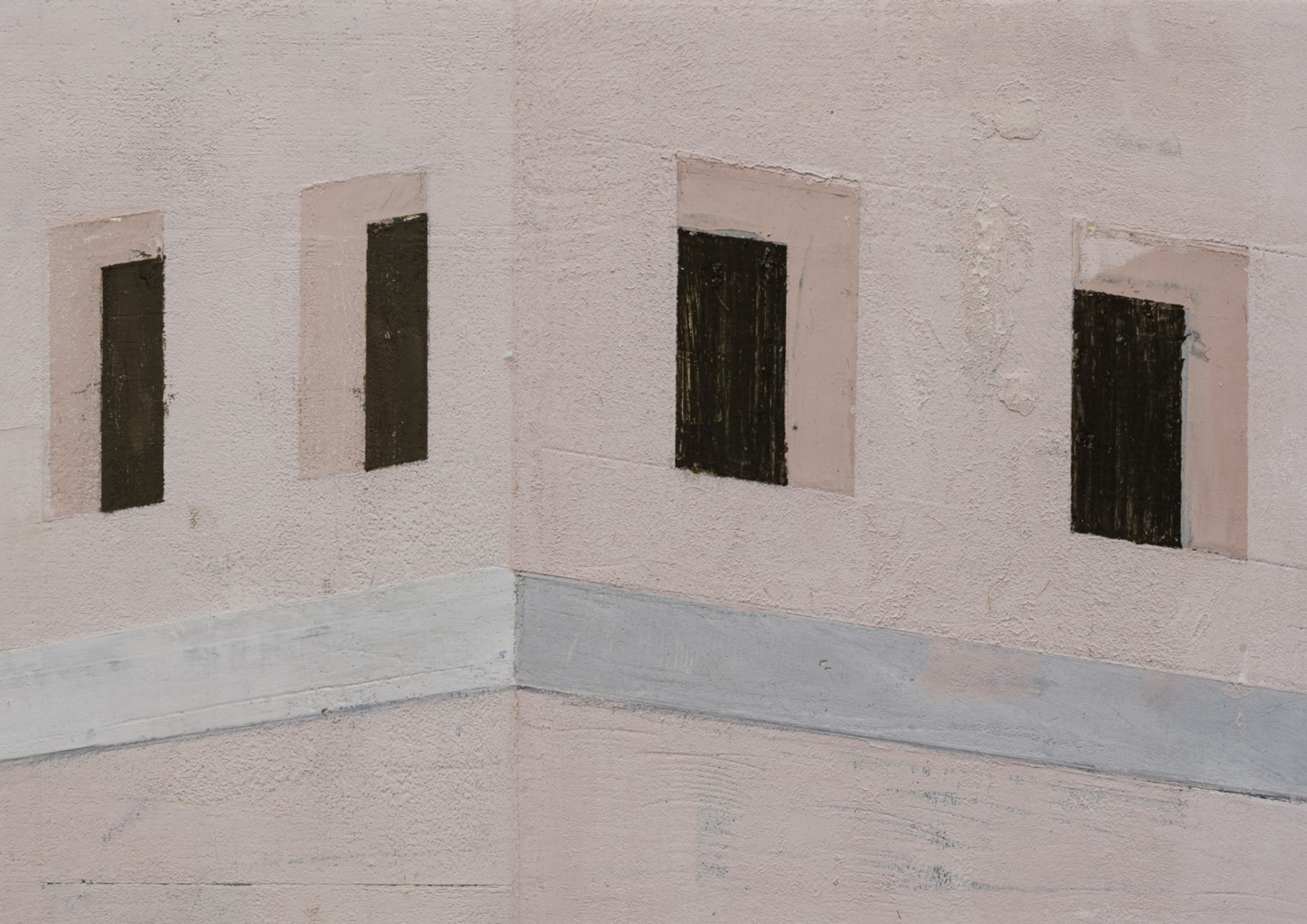
Untitled, 2021
oil paint and wax on linen
24,4 x 18,7 x 2 cm
9.6 x 7.4 x 0.8 in

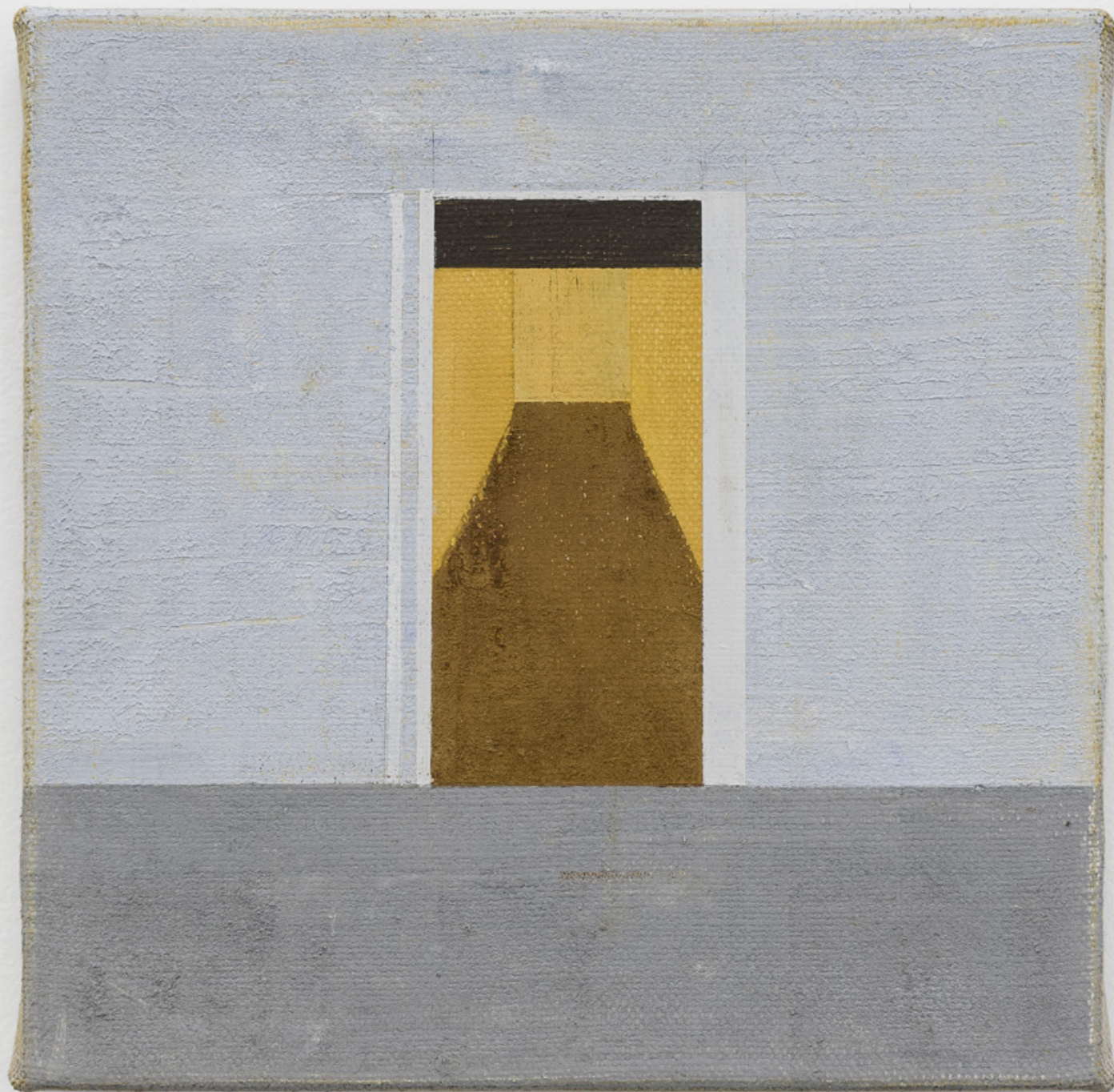


Untitled, 2021
oil paint and wax on linen
24,4 x 18,6 x 2 cm
9.6 x 7.3 x 0.8 in



Untitled (Giotto), 2021
oil paint and wax on linen
30,3 x 30,6 x 2,7 cm
11.9 x 12 x 1.1 in





Untitled (Fra), 2021
oil paint and wax on linen
30,4 x 31,1 x 2,7 cm
12 x 12.2 x 1.1 in



Untitled (Giotto), 2021
oil paint and wax on linen
30,3 x 30,4 x 2,5 cm
11.9 x 12 x 1 in



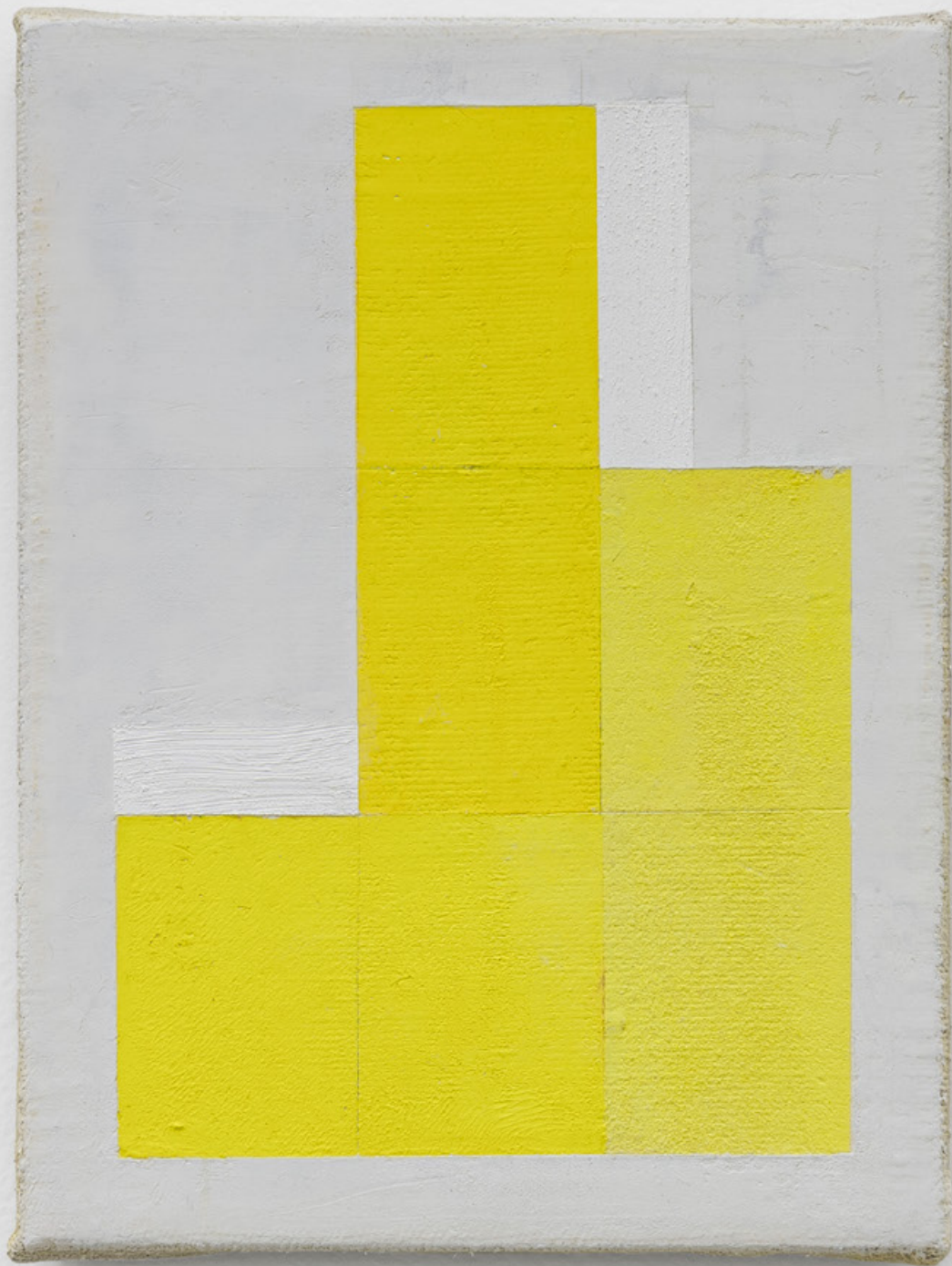
Untitled (Fra), 2022
oil paint and wax on linen
30,2 x 31,2 x 3 cm
11.9 x 12.3 x 1.2 in



Untitled (Giotto), 2021
oil paint and wax on linen
30,6 x 30,2 x 2,5 cm
12 x 11.9 x 1 in







Untitled, 2021
oil paint and wax on linen
24,6 x 18,5 x 2 cm
9.7 x 7.3 x 0.8 in



Untitled, 2021
oil paint and wax on linen
24,4 x 18,8 x 2 cm
9.6 x 7.4 x 0.8 in

Untitled, 2021
oil paint and wax on linen
24,4 x 18,5 x 2 cm
9.6 x 7.3 x 0.8 in



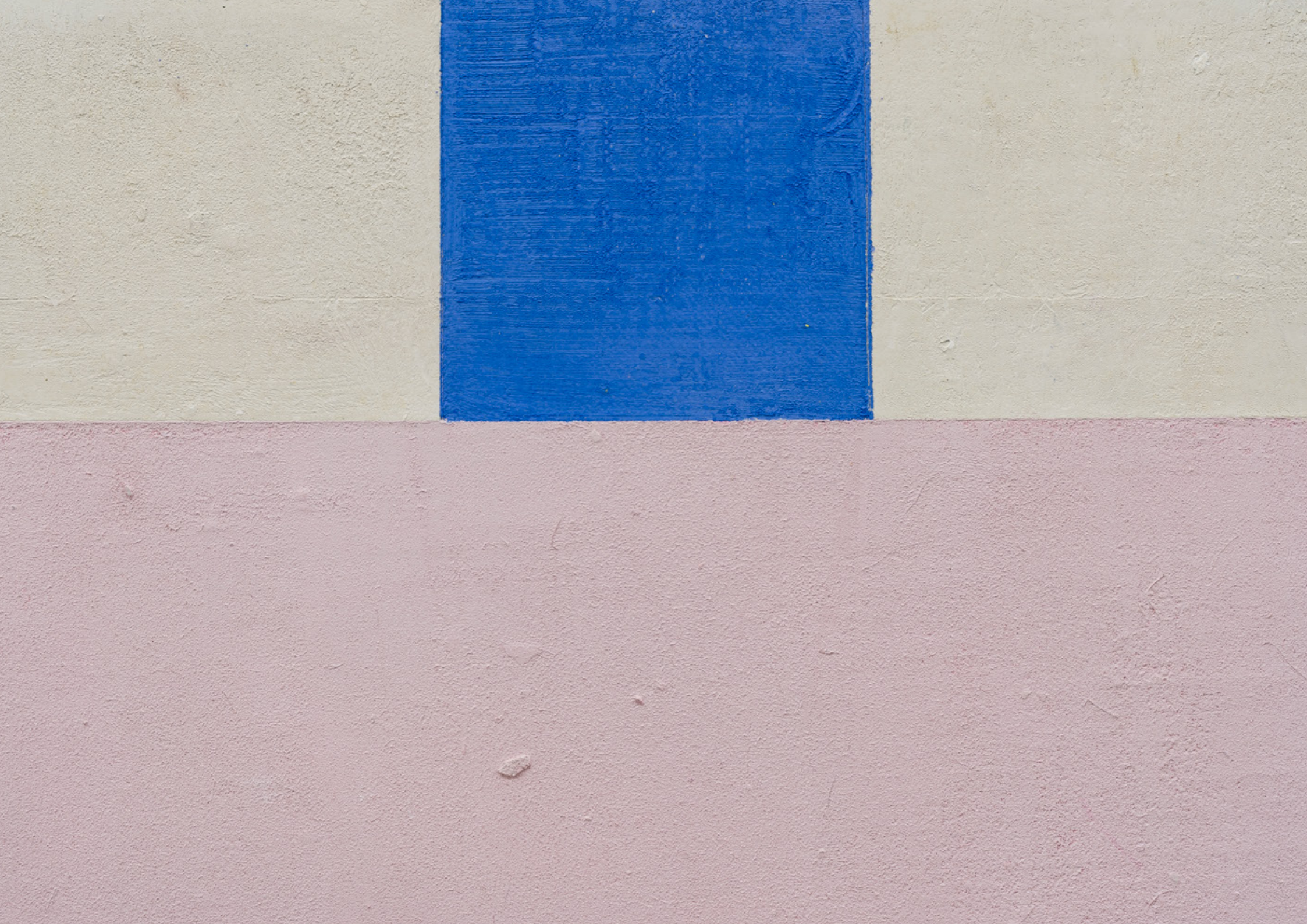


Untitled, 2021
oil paint and wax on linen
24,4 x 18,7 x 2 cm
9.6 x 7.4 x 0.8 in

artist's studio
São Paulo, 2022





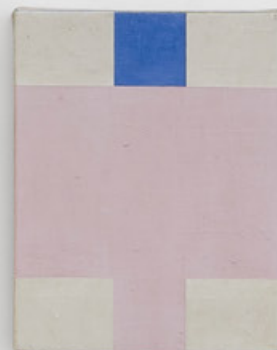




Untitled (Piero), 2021
oil paint and wax on linen
30,2 x 30,8 x 2,6 cm
11.9 x 12.1 x 1 in



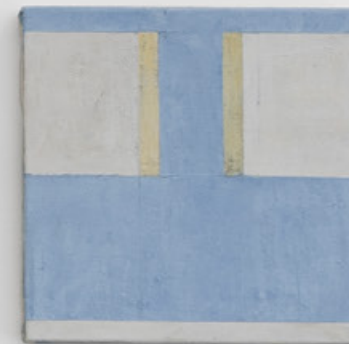
Untitled, 2021
oil paint and wax on linen
30,3 x 24,5 x 2,5 cm
11.9 x 9.6 x 1 in



Untitled, 2021
oil paint and wax on linen
30,8 x 24 x 2,7 cm
12.1 x 9.4 x 1.1 in



Untitled, 2020
oil paint and wax on linen
30 x 24 cm
11.8 x 9.4 in



Untitled, 2021
oil paint and wax on linen
30,1 x 30,8 x 2,5 cm
11.9 x 12.1 x 1 in

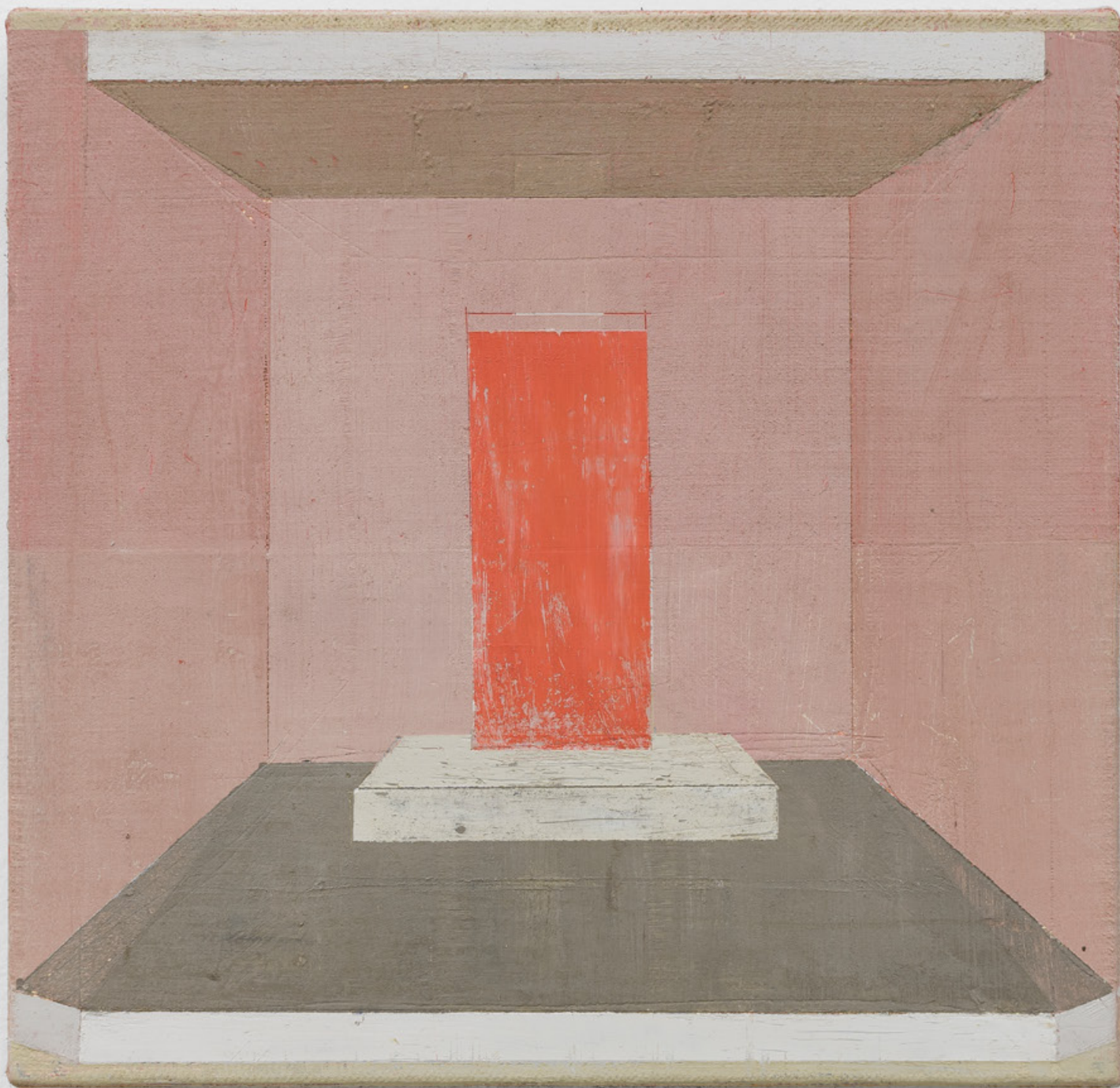


Untitled, 2021
oil paint and wax on linen
30,3 x 30,3 x 2,6 cm
11.9 x 11.9 x 1 in



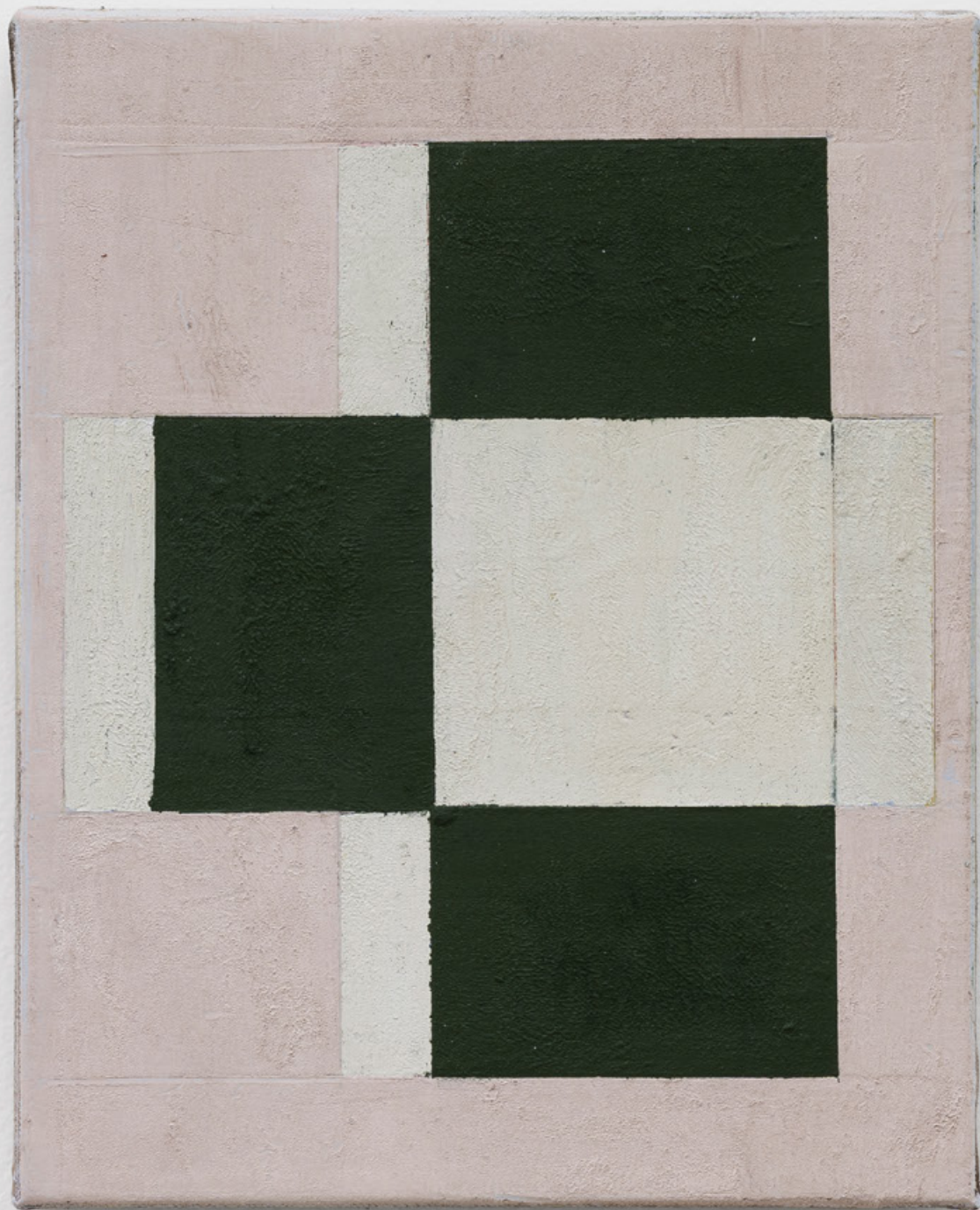
Untitled (Giotto), 2021
oil paint and wax on linen
30,2 x 24,5 x 2,5 cm
11.9 x 9.6 x 1 in





Untitled (Fra), 2020
oil paint and wax on linen
30,3 x 30,5 x 2,5 cm
11.9 x 12 x 1 in





Untitled, 2022
oil paint and wax on linen
30,2 x 24,6 x 2,8 cm
11.9 x 9.7 x 1.1 in









Untitled (Piero), 2019
oil paint and wax on linen
30,2 x 30,6 x 2,5 cm
11.9 x 12 x 1 in



Untitled (Sassetta), 2020
oil paint and wax on linen
30,2 x 30,6 x 2,7 cm
11.9 x 12 x 1.1 in



Sem título (Fra), 2020
oil paint and wax on linen
30,1 x 30,6 x 2,5 cm
11.9 x 12 x 1 in

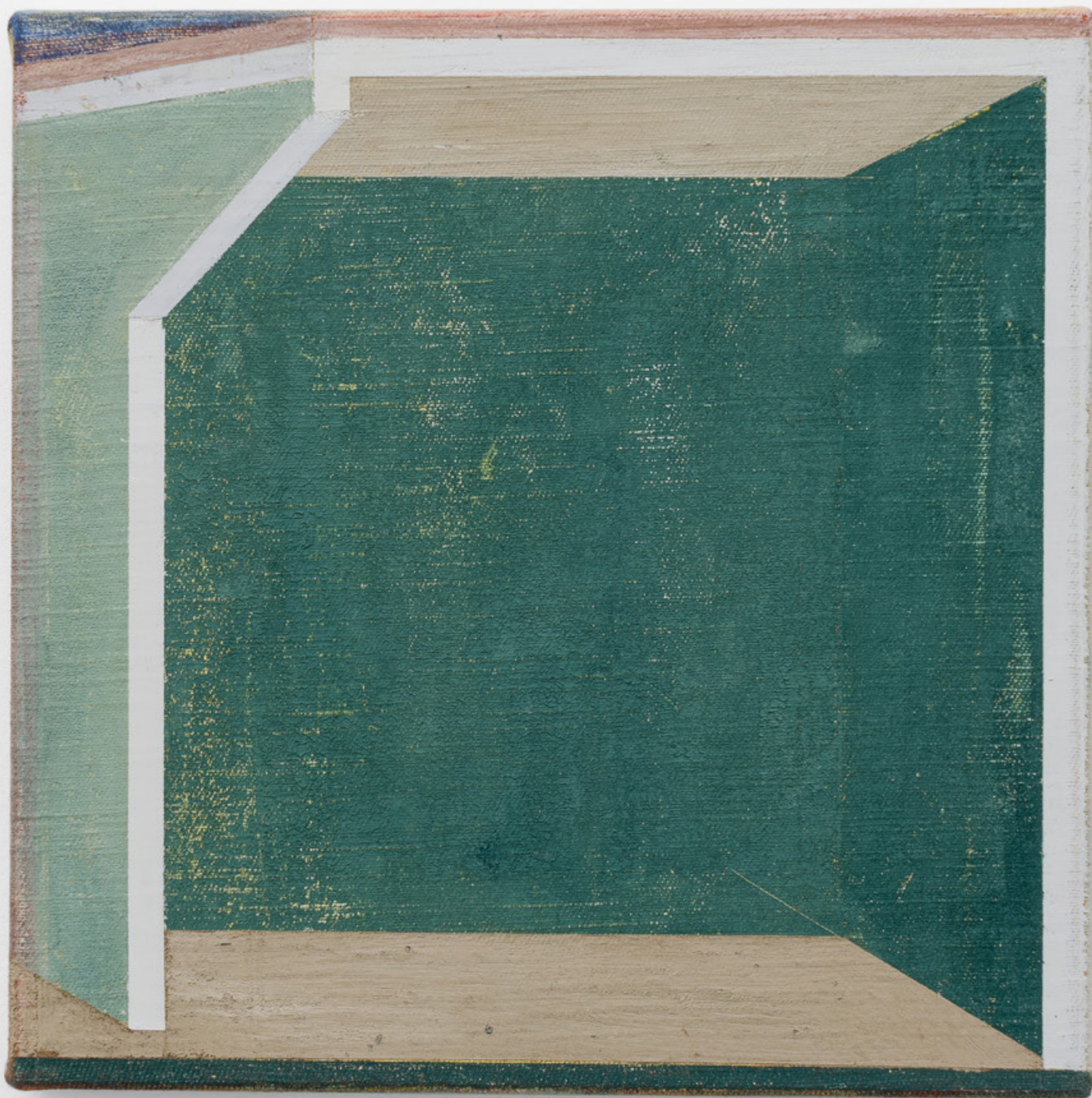


Untitled (Uccello), 2021
oil paint and wax on linen
30,3 x 30,8 x 2,5 cm
11.9 x 12.1 x 1 in

‘*Atalhos* [Shortcuts] allows for the junction of works, forming sentences. Depending on their neighbors, they take on other meanings. This is the idea of the shortcut, to create groups of works based on the passage from one referential field to another, possibly proposing new meanings.’

—Fábio Miguez





Untitled (Giotto), 2021
oil paint and wax on linen
30,4 x 30,6 x 2,8 cm
12 x 12 x 1.1 in



Untitled, 2022
oil paint and wax on linen
30,3 x 31 x 2,8 cm
11.9 x 12.2 x 1.1 in



Untitled, 2022
oil paint and wax on linen
30,4 x 30,2 x 2,7 cm
12 x 11.9 x 1.1 in









Untitled, 2021
oil paint and wax on linen
24,5 x 18,6 x 2 cm
9.6 x 7.3 x 0.8 in



Untitled, 2021
oil paint and wax on linen
24,2 x 18,4 x 2 cm
9.5 x 7.2 x 0.8 in



Untitled, 2021
oil paint and wax on linen
30,5 x 30,5 x 2,7 cm
12 x 12 x 1.1 in

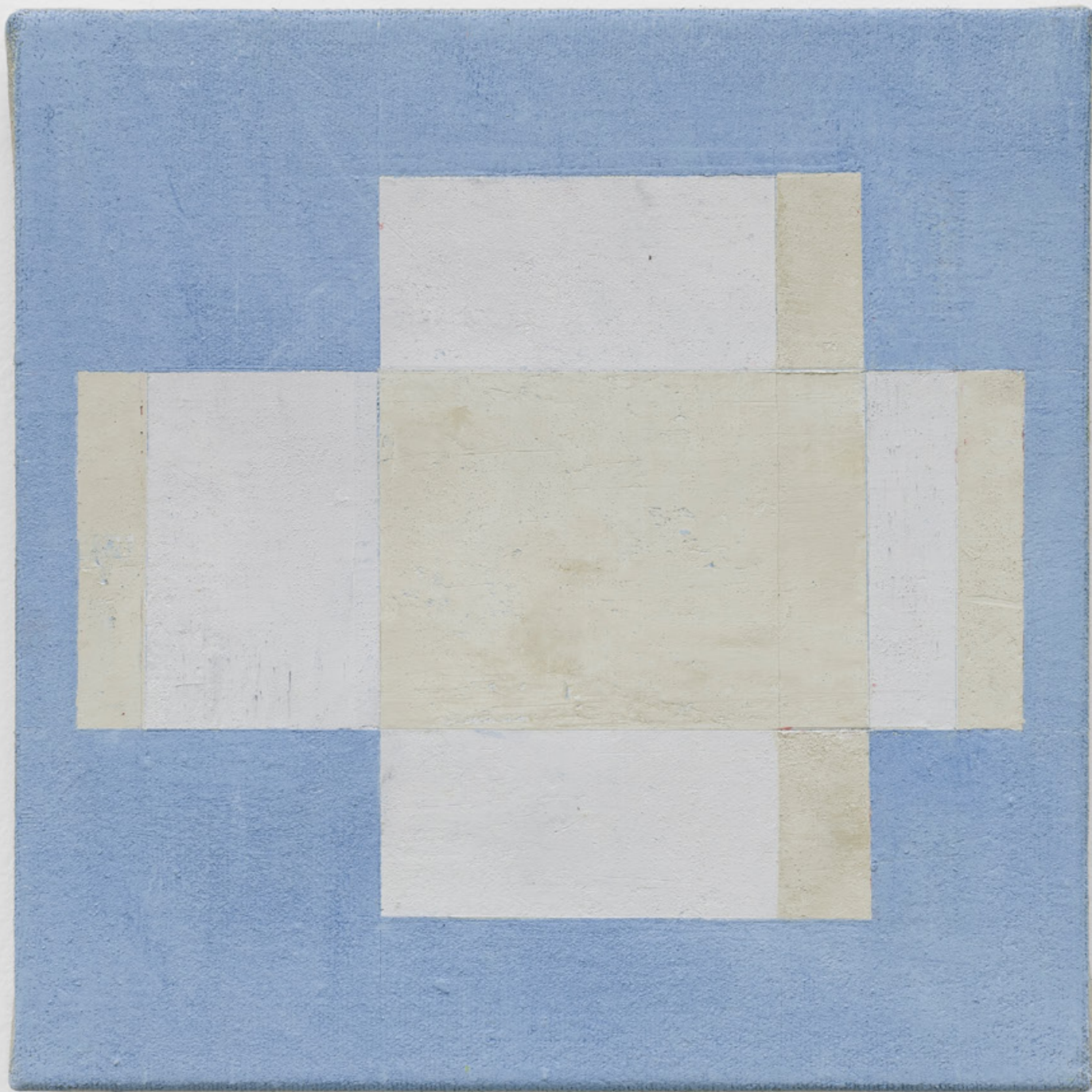


Untitled, 2019
oil paint and wax on linen
30,3 x 30,8 x 2,6 cm
11.9 x 12.1 x 1 in



Untitled, 2021
oil paint and wax on linen
30,5 x 30,7 x 2,7 cm
12 x 12.1 x 1.1 in

Untitled, 2021
oil paint and wax on linen
30,2 x 30,8 x 2,7 cm
11.9 x 12.1 x 1.1 in



Untitled, 2021
oil paint and wax on linen
30,5 x 30,5 x 2,7 cm
12 x 12 x 1.1 in

artist's studio
São Paulo, 2022



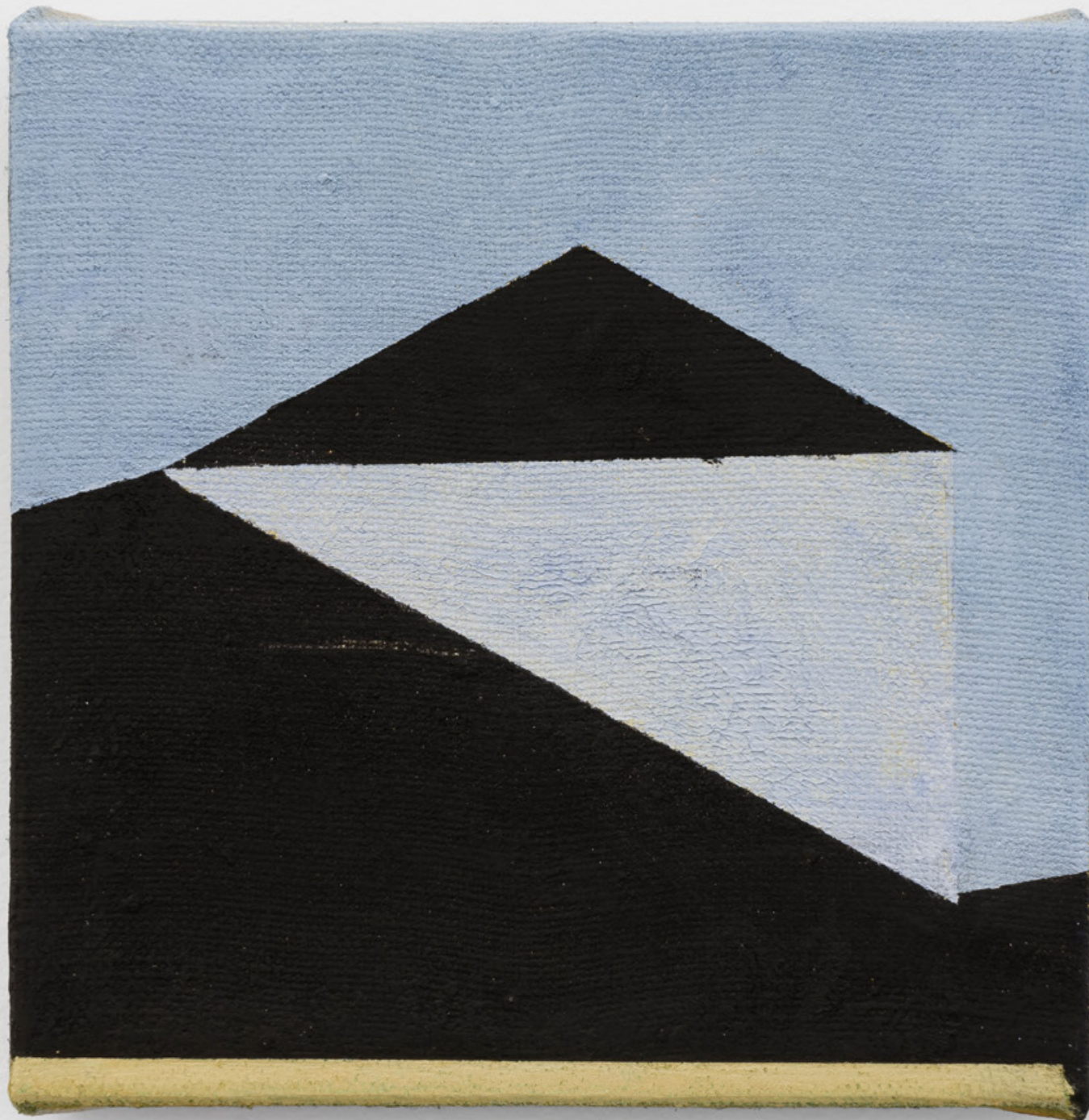
Untitled, Volpi series, 2020
oil paint and wax on linen
190 x 180,6 x 4 cm
74.8 x 71.1 x 1.6 in



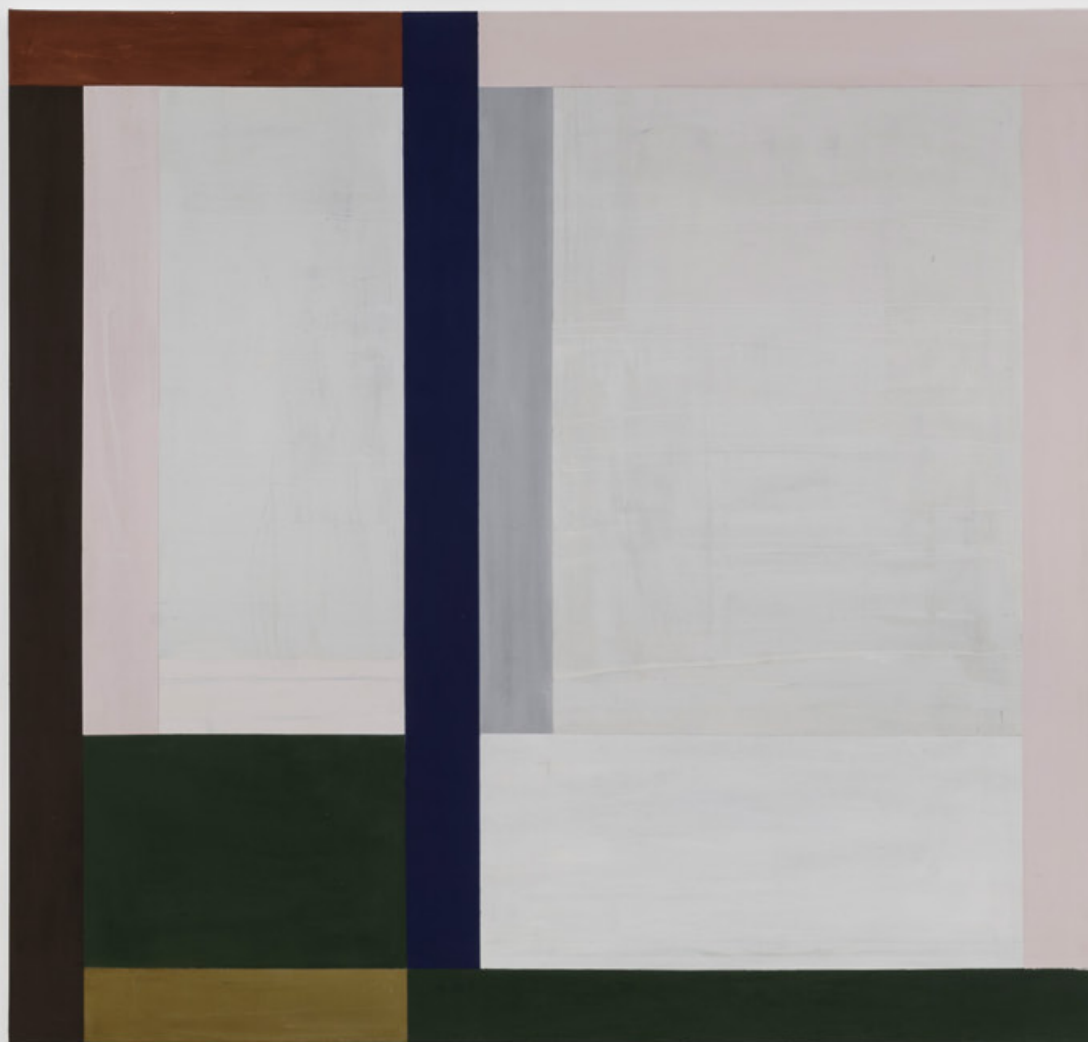


—
Untitled, Volpi series, 2022
oil paint and wax on linen
180,4 x 190,5 x 3,8 cm
71 x 75 x 1.5 in

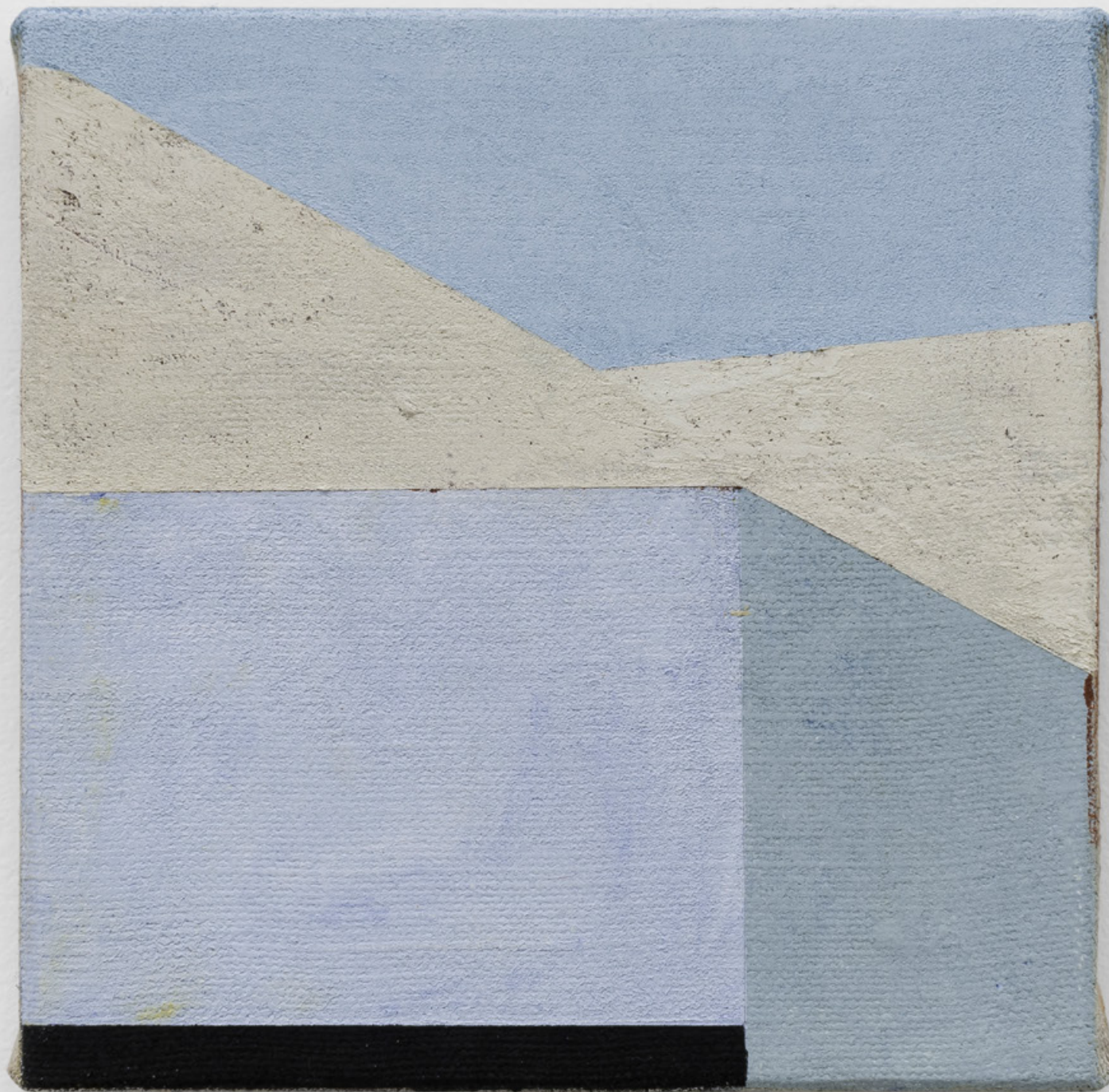




—
Untitled, Volpi series, 2022
oil paint and wax on linen
25 x 24,2 x 3 cm
9.8 x 9.5 x 1.2 in



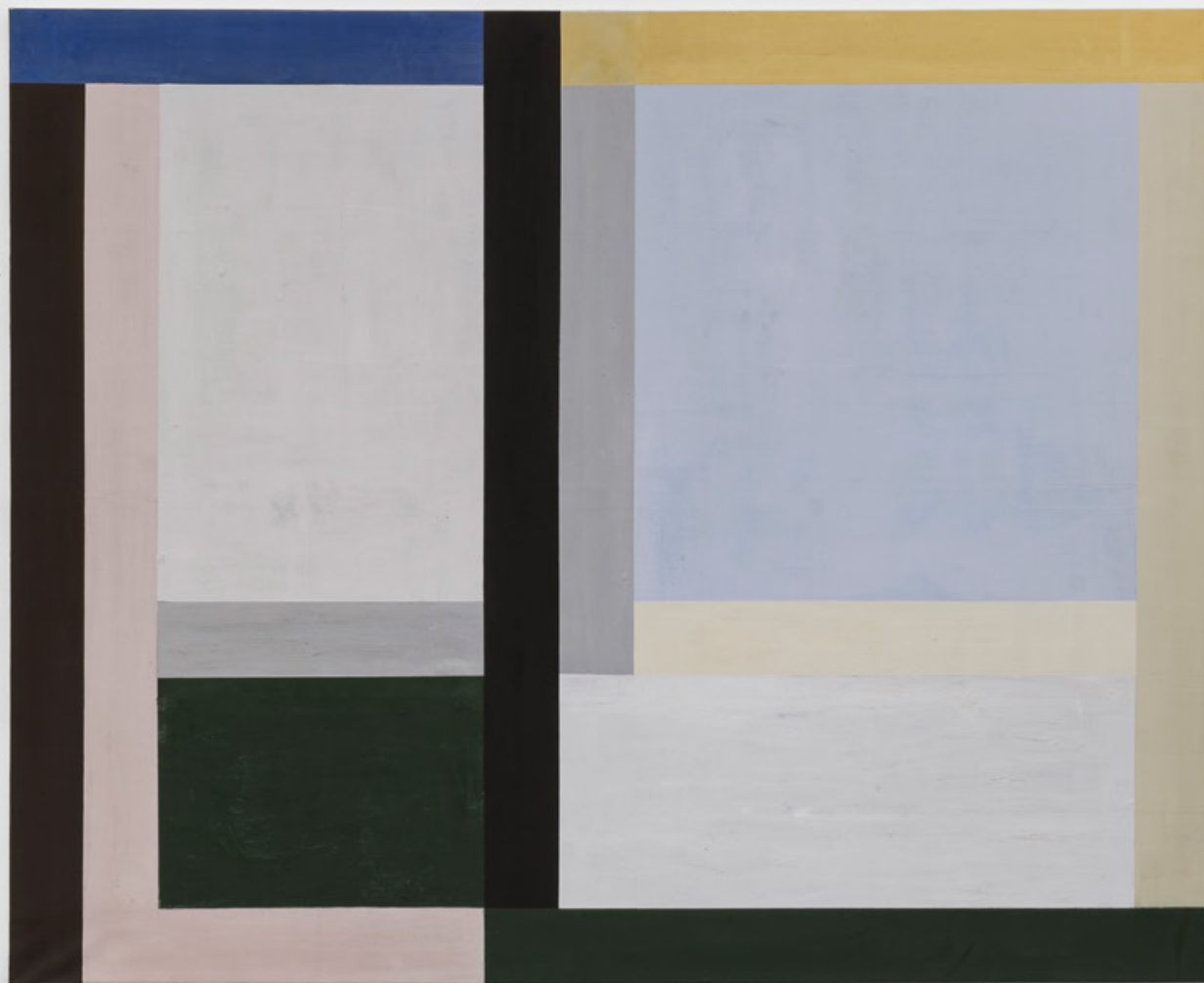
Untitled, Volpi series, 2021
oil paint and wax on linen
180,4 x 190,2 x 4,2 cm
71 x 74.9 x 1.7 in



Untitled, Volpi series, 2022
oil paint and wax on linen
24,3 x 25 x 3 cm
9.6 x 9.8 x 1.2 in



Untitled, Volpi series, 2022
oil paint and wax on linen
170,5 x 210,5 x 3,8 cm
67.1 x 82.9 x 1.5 in



fábio miguez

b. 1962, São Paulo, Brazil, where he lives and works

Fabio Miguez began his artistic career in the 1980s when, alongside Carlito Carvalhosa, Nuno Ramos, Paulo Monteiro, and Rodrigo Andrade, he founded the artist's space Casa 7. Miguez initially worked with painting like the others group members. During the 1990s, he started to produce, parallel to his paintings, the series of photographs entitled *Derivas*, later published with the name *Paisagem Zero* in 2013. Those photos are closely related to the paintings as we can see in the tension between the indeterminacy of the process and the apparent construction of the final product and in the density of light and dark shades.

In the 2000s, Miguez started to develop three-dimensional works, such as the installations *Onde* (2006), *Valises* (2007), and *Ping-pong* (2008), which expanded his line of research and his medium of choice: painting. His degree in architecture brings to his work a constructivist influence that dialogues with concerns regarding scale, material, and figuration. The artist often deals with modular forms in relation to combinatory logic, employing repetitions and operations of inversion and mirroring. In his work, every painting is a fragment of the real in the way that each one reaffirms its material condition.

selected solo exhibitions

- *Fragmentos do real (atalhos)* – Fabio Miguez, Instituto Figueiredo Ferraz (IFF), Ribeirão Preto, Brazil (2018)
- *Horizonte, deserto, tecido, cimento*, Nara Roesler, Rio de Janeiro, Brasil (2016), and São Paulo, Brazil, (2015)
- *Paisagem zero*, Centro Universitário Maria Antonia, São Paulo, Brazil (2012)
- *Temas e variações*, Instituto Tomie Ohtake, São Paulo, Brazil (2008)
- *Fabio Miguez*, Pinacoteca do Estado de São Paulo, São Paulo, Brazil (2003)

selected group exhibitions

- *Coleções no MuBE: Dulce e João Carlos de Figueiredo Ferraz – Construções e geometrias*, Museu de Ecologia e Escultura (MuBE), São Paulo, Brazil (2019)
- *Oito décadas de abstração informal*, Museu de Arte Moderna de São Paulo (MAM-SP), São Paulo, Brazil (2018)
- *Casa 7*, Pivô, Edifício Copan, São Paulo, Brazil (2015)
- 5th Bienal do Mercosul, Porto Alegre, Brazil (2005)
- 2nd Bienal de La Habana, Cuba (1986)
- 20th Bienal de São Paulo, São Paulo, Brazil (1989)
- 18th Bienal de São Paulo, São Paulo, Brazil (1985)

selected institutional collections

- Centro Cultural São Paulo (CCSP), São Paulo, Brazil
- Instituto Figueiredo Ferraz (IFF), Ribeirão Preto, Brazil
- Museu de Arte Moderna do Rio de Janeiro (MAM-Rio), Rio de Janeiro, Brazil
- Museu de Arte Moderna de São Paulo (MAM-SP), São Paulo, Brazil
- Pinacoteca do Estado de São Paulo, São Paulo, Brazil

nara roesler

são paulo

avenida europa 655,
jardim europa, 01449-001
são paulo, sp, brasil
t 55 (11) 2039 5454

rio de janeiro

rua redentor 241,
ippanema, 22421-030
rio de janeiro, rj, brasil
t 55 (21) 3591 0052

new york

511 west 21st street
new york, 10011 ny
usa
t 1 (212) 794 5034

nararoesler.art

info@nararoesler.art